



Funded by
the European Union

www.biorural.eu



RAMAS - Remote Agriculture Monitoring and Advisory System for improvement of agri production and resources optimization

Angela Zhivachki BSc - AgFutura Technologies

14-16 February 2024





About us

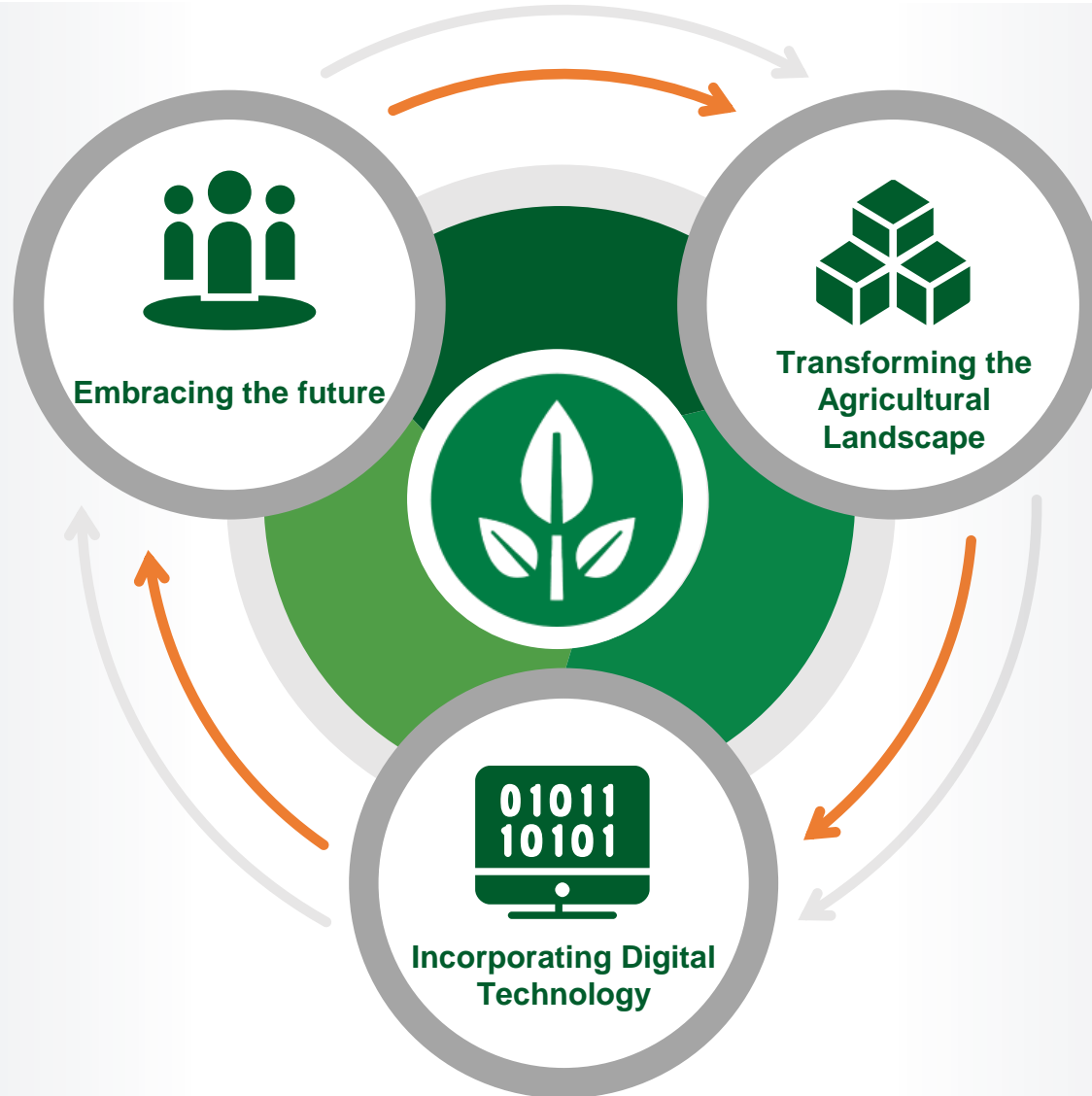
- ✓ Founded in 2016. Supporting the agricultural sector with innovative solutions in the field of digital and precision agriculture, agri-business development and international agricultural development;
- ✓ A team of 12 full-time and 10 external experts a total of 22;
- ✓ Private digitally based advisory system - RAMAS
- ✓ Largest digital infrastructure and PA infrastructure

Main Statistics

- 35+ European & national projects
- 100+ European partners
- 20+ National clients/partners
- 3 Platforms made
- 1 Software application



Why Digital Agriculture?



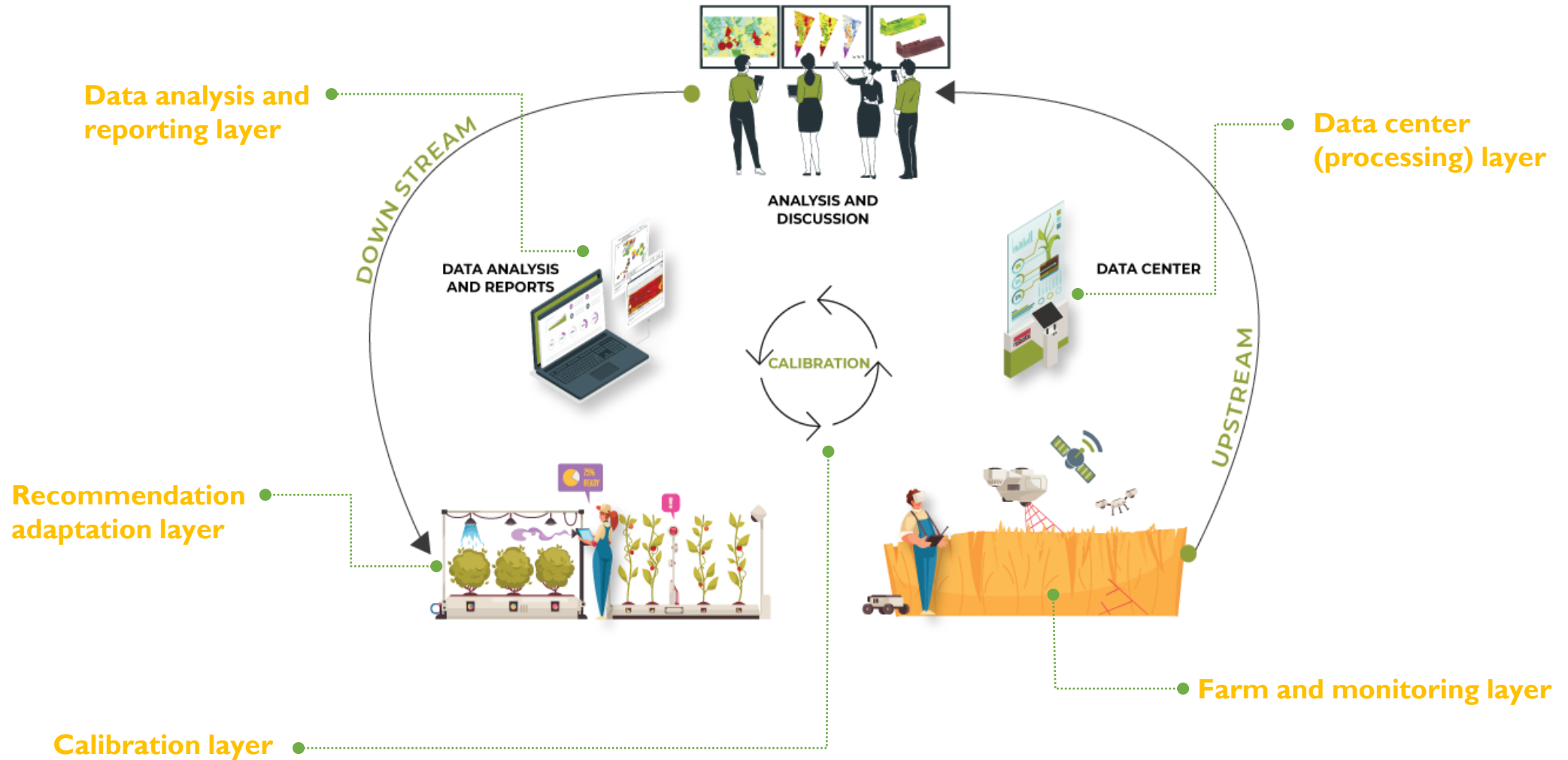
3. Sustainability

4. Traceability

1. Efficiency

2. Productivity

What is RAMAS ?





How it works?



FUNCTION

Monitoring of the crops
(from physics to digits)

Moving data
(from field to web application)

Analyzing data
(from data to information)

Sending Recommendations
(from web application back to farmer)



BENEFITS

Continuous expert **support** and **advise**, direct **communication** with agronomist through text, image and video

Crop health **monitoring** using satellite and drone images

Register of production capacity to have insight into all agrotechnical operations to **gain recommendations** by agronomist

Farmers receive easy to follow recommendations for irrigation, pesticides, fertilization and other agronomic practices to optimize effort and costs.



Generating data



ABOVE SOIL CONDITIONS

IoT

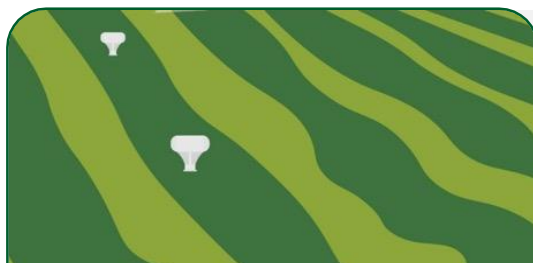
- METEO STATIONS
- AIR TEMPERATURE
- AIR HUMIDITY
- PLUNOMETER
- UAVs
- ANEMOMETER
- LEAF WETNESS
- PHEROMONE TRAPS
- SATELLITES



CROP

IoT

- PESTS AND DISEASE



SOIL

IoT

- SALINITY (WATER CONDUCTIVITY SENSOR)
- IRRIGATION VALUES MONITORING
- SOIL HUMIDITY



BENEFITS FROM UTILIZING RAMAS

| SOCIAL | ECONOMIC | ENVIRONMENTAL |
|---|--|--|
| Knowledge Sharing and Community Building | Increased Productivity and Efficiency | Sustainable Resource Management |
| Improved Working Conditions | Cost Reduction | Soil Health Improvement |
| Enhanced Decision Making | Market Access and Traceability | Biodiversity Conservation |
| Education and Training Opportunities. | Risk Management | Carbon Footprint Reduction |





Thank You!

Angela Zhivachki - Agricultural Engineer



biorural.eu



[@bio_rural](https://twitter.com/@bio_rural)



BioRural channel



[biorural](https://www.linkedin.com/company/biorural)



[bioruraleu](https://www.facebook.com/bioruraleu)



BioRural