

## PA #18 Becoming part of the community of interest for the European Rural Bioeconomy Network – ERBN

The ERBN - A network to speed-up the knowledge transfer on small scale solution for rural practitioners.

One of the aims of BioRural is the creation of a community of interest at EU level, facilitating the knowledge transfer on small scale innovative solutions, already applicable, but not so well known, that habilitate small rural stakeholders in their transition towards full circular and sustainable bioeconomy.

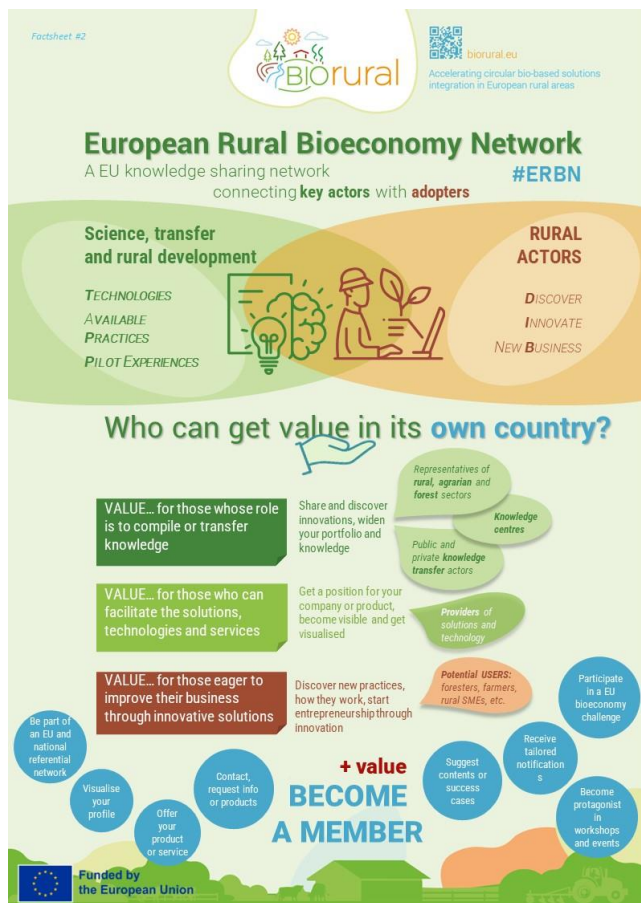


Figure 1: ERBN 1

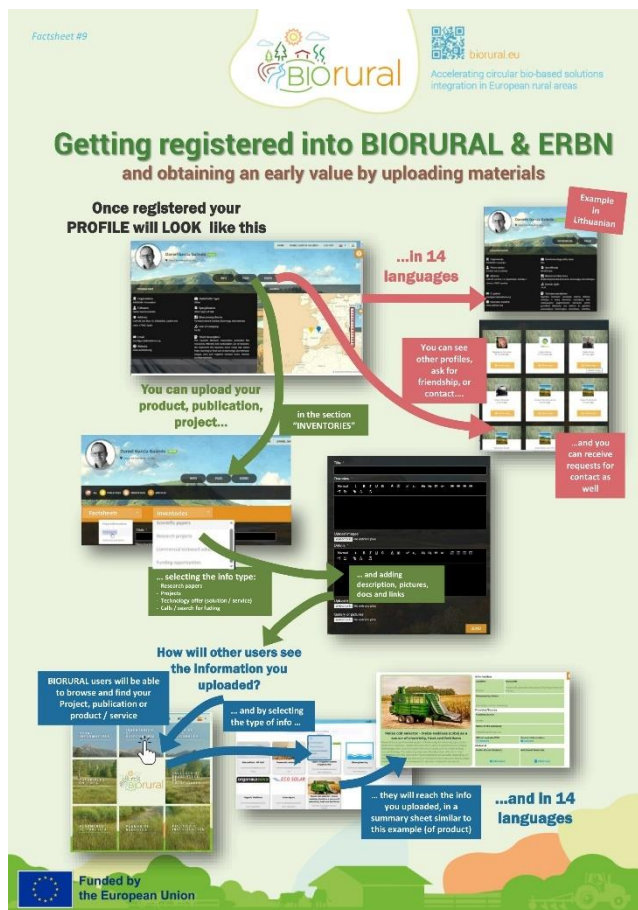


Figure 2: ERBN 2

This community has started growing hosted at the [BioRural Toolkit](#), where any rural stakeholder or any key actor in the knowledge transfer can easily subscribe and interact in a multi-language user friendly environment.

### The value in practice for any member of the ERBN community of interest

[The BioRural Toolkit](#) (see details in practice abstract PA#18) is an online repository and social network environment.

Persons registering have the benefit to:

- **Create** a personal customised **profile**;
- Be visible, and make visible their **offers, or needs**;
- **Browse for solutions and success cases** (hosted into Inventory section of the toolkit), identify other stakeholders, and contacts;
- **Upload** in the toolkit own solutions, cases, projects;
- **Consult all materials**: factsheets, success stories, technology solutions, interactive maps (geoportal), online tutorials and courses, research results and blueprints.

## The value in practice: farmers, foresters and local advisors

Individuals like farmers, foresters, or small companies in rural areas are not always connected to research and science circles, or to innovation poles or clusters. Especially when sited in remote areas is based on personal contacts or on internet information mainly. However: where to find reliable practices actually suitable? How to put them into operation? Especially when they are innovative and non-usual practices.

Foresters, farmers and local advisors can get a first hint and source of inspiration by becoming part of BioRural community of interest for ERBN: browse for solutions in their own language, in a social environment filled with revised practical information.

## Technology providers, the value as facilitators of the change

Technology providers are a key piece for the community of interest for ERBN, since they facilitate the solutions and innovations that practitioners and local advisors may demand. They can gain visibility by uploading their practices and projects, and by explaining how their innovations work in practice.

## ERBN structure in the long term

BioRural project is currently dynamising the knowledge transfer actions on small scale bioeconomy solutions for sustainable bioeconomy. However, the long term requires a structure, and BioRural is therefore engaging key actors in the AKIS system (systems of knowledge transfer) of 14 EU countries to upgrade the BioRural community towards a permanent structure of knowledge transfer, the European Rural Bioeconomy Network.



Figure 1: ERBN3