



# UMA MARCA QUE IMPORTA



## CERTIFIED FORESTRY FOR SUSTAINABLE PRODUCTION – THE PORTUGUESE CASE

PEFC PORTUGAL, 14.3.2024



**UMA MARCA  
QUE IMPORTA**

## What is PEFC (Programme for the Endorsement of Forest Certification) ?

- Is a **leading global alliance** of national forest certification systems.
- **Dedicated to promoting sustainable forest management through independent third-party certification.**
- As an international non-profit, non-governmental organization.

### Our history

In 1999, small- and family forest owners from Europe came together to create a forest certification system that would enable them to demonstrate their excellence in sustainable forest management. 20 years on, PEFC is the largest forest certification system in the world!

It is an international system where PEFC Council operates through mutual recognition of national schemes.

#### ❖ PEFC Council

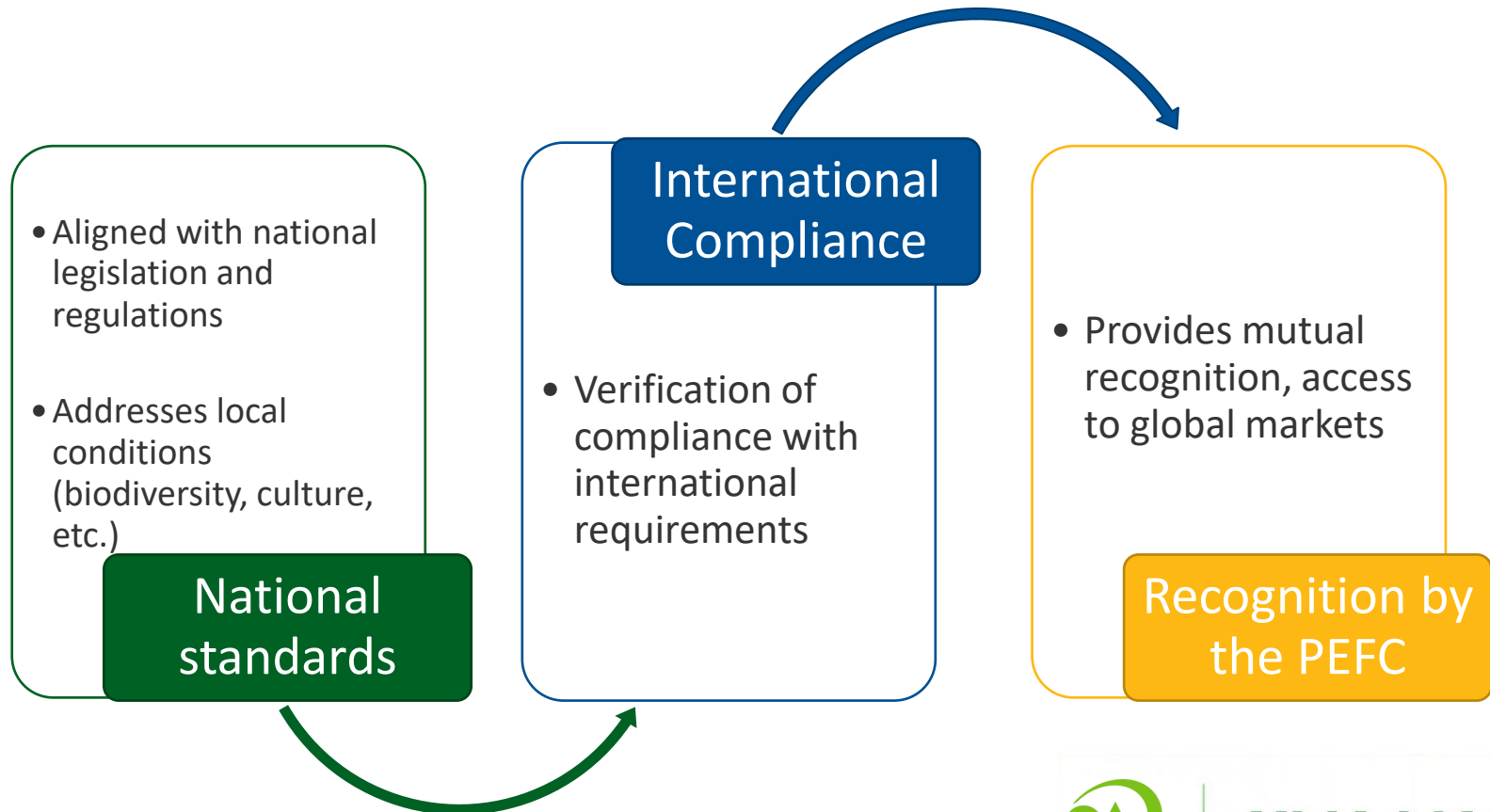
- Establishes international standards (*Benchmarks*).
- Promotes market access and recognition (responsible for the evaluation of the members).

#### ❖ O PEFC Portugal:

- One of the founding members of the Alliance.
- 13<sup>th</sup> country to get recognition.
- We are a National Governing Body, representing PEFC at national level.

# What is certification?

Forest certification provides a mechanism to promote the sustainable management of our forests and ensures that forest-based products reaching the marketplace have been sourced from sustainably managed forests.





**UMA MARCA  
QUE IMPORTA**

## Our approach

At PEFC, we care for forests globally and locally. We work to protect our forests by promoting sustainable forest management through certification. This means we can all benefit from the many products that forests provide now, while ensuring these forests will be around for generations to come.

### What is sustainable forest management?

"The stewardship and use of forests and forest lands in a way, and at a rate, that maintains their biodiversity, productivity, regeneration capacity, vitality and their potential to fulfil, now and in the future, relevant ecological, economic and social functions, at local, national, and global levels, and that does not cause damage to other ecosystems." As defined by Forest Europe and adopted by the UN Food and Agriculture Organization (FAO).

# Protecting forests globally and locally

While the concept of sustainable forest management is global, its implementation is local. This is why we work with local organizations to advance responsible forestry through national forest certification systems.

Forests are highly diverse; as is their management, local traditions, cultural and spiritual expectations, average property sizes and support structures. This diversity means one size does not fit all when it comes to forest certification.

This is why PEFC do not set one international standard that all forest owners must follow in order to achieve [certification](#).

Instead, we work through national forest certification systems, enabling countries to tailor their sustainable forest management requirements to their specific forest ecosystems, the legal and administrative framework, the socio-cultural context and other relevant factors.



**UMA MARCA  
QUE IMPORTA**

# Forestry context in Portugal



**UMA MARCA  
QUE IMPORTA**

## NÚMEROS DO PEFC PORTUGAL

31 DE DEZEMBRO DE 2023



**ÁREA CERTIFICADA**

**329 744**  
mil hectares

**PEFC  
INTERNACIONAL**

**295**  
milhões de  
hectares



**PROPRIETÁRIOS/  
GESTORES**

**4 159**

**750 000**



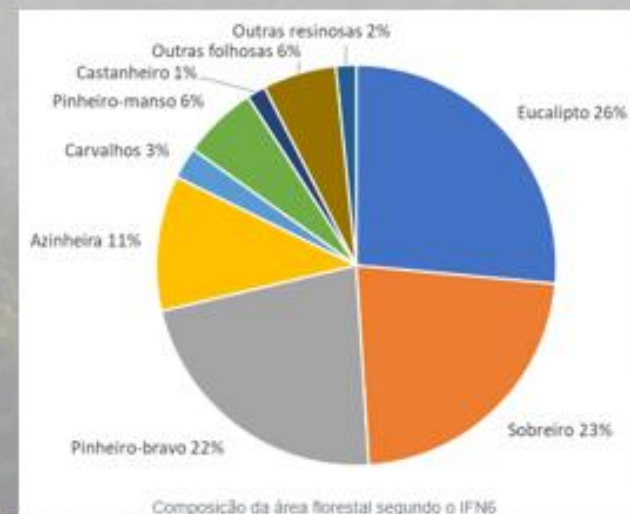
**EMPRESAS**

**686**

**20 000**

## Forest composition

- **Forest is the main land use in Portugal**, occupying 3.2 million ha, i.e., **36% of the national territory**, followed by 31% of uncultivated areas and 24% of farmland.
- Is composed mostly of **autochthonous species (72%)**. The *montados* (cork oaks and holm oaks stands) are the main forest occupation, with around 1 million ha.
- **Eucalyptus occupies 26%** of the forest area (845 000 ha), **cork oak 22%** (719 000 ha) and **maritime pine 22%** (713 000 ha).



## Ownership regime

- **Private forest ownership represents 84%** of the Portuguese forest ownership. 6.5% are owned by industrial companies and the remain by **an estimated 0.5 million small family-owned forestland**.
- Public areas represent 16% of the total, of which **only 2% belong to the State's private domain**.
- **Size of the forest property** has a very marked geographical distribution, with the large number of plots located in the **North and Centre of the country, where farms reach dimensions of less than 1 ha**.



## Economic contribution

- The forestry sector contributes for 2% of the national GDP. External trade balance is 2,000 million EUR in 2021.
- The most important forest and forest-based products **exported** are from **vertically integrated main sectors**: paper and cardboard, wood pulp, cork, wood and resin products and furniture. They account for **10% of national exports and 70% of the national value incorporation rate**.
- Other activities at local scale also contribute production of nuts, pine nuts, hunting, sport fishing in inland waters, outdoor activities (tourism and leisure) and trees seedlings.
- Forest generates around **115 000 direct jobs (4% of the active population)**.

### FORESTRY CONTEXT IN PORTUGAL:

DESPITE THE HIGH NUMBER OF LAND OWNERS AND THE SMALL SIZE OF THE FOREST PROPERTY, THE GOODS PRODUCED IN THIS WAY SUPPORT AN IMPORTANT AND INTEGRATED INDUSTRIAL NATURAL RESOURCES BASED CHAIN, SUPPORTING A STRONG EXPORT SECTOR.

## Key aspects of the Portuguese forests

- Some A long and well-established relationship between **forests and society**.
- One of the **biggest large scale afforestation programmes of the 20<sup>th</sup> century**: forest cover has increased from under 2 million to over 3.2 million hectares during the last 100 years.
- Various regions with different forest species and silvicultural systems and the need to **promote multiple land use and to fix population**.
- **Specific forestry legislation** directed towards regional strategies and forest planning.



NP 4406:2022

## Sustainable Forest Management Systems Application of the Pan-European Criteria for Sustainable Forest Management



PEFC Portugal  
Rua Marquês Sá da  
Bandeira n.º 74-2  
1050-070 Lisboa  
Portugal  
t +351 210995153  
geral@pefc.pt  
[www.pefc.pt](http://www.pefc.pt)



**UMA MARCA  
QUE IMPORTA**

## The Sustainable Forest Management

It is the answer to the balance between the existence and maintenance of forests and their use and enjoyment by the Society.

SFM is a tool that guarantees the quality of management.

## PEFC PORTUGUESE STANDARD BASED ON

PAN-EUROPEAN CRITERIA AND ITS  
GUIDELINES FOR SUSTAINABLE FOREST  
MANAGEMENT AT OPERATIONAL-LEVEL,  
ADOPTED IN THE PROCESS OF  
MINISTERIAL CONFERENCES FOR THE  
PROTECTION OF FORESTS IN EUROPE

**CRITERION 1:** MAINTENANCE OR APPROPRIATE  
ENHANCEMENT OF FOREST RESOURCES AND THEIR  
CONTRIBUTION TO THE **GLOBAL CARBON CYCLE**.

**CRITERION 2:** MAINTENANCE OF FOREST **ECOSYSTEM  
HEALTH AND VITALITY**.

**CRITERION 3:** MAINTENANCE AND  
ENCOURAGEMENT OF **PRODUCTIVE FUNCTIONS OF  
FORESTS** (WOOD AND NON- WOOD).

**CRITERION 4:** MAINTENANCE, CONSERVATION AND  
APPROPRIATE ENHANCEMENT OF **BIOLOGICAL  
DIVERSITY IN FOREST ECOSYSTEMS**.

**CRITERION 5:** MAINTENANCE OR APPROPRIATE  
ENHANCEMENT OF **PROTECTIVE FUNCTIONS** IN  
FOREST MANAGEMENT (NOTABLY SOIL AND WATER).

**CRITERION 6:** MAINTENANCE OR APPROPRIATE  
ENHANCEMENT OF **SOCIO-ECONOMIC FUNCTIONS  
AND CONDITIONS**.



**UMA MARCA  
QUE IMPORTA**

**Sustainable forest management certification** assures that forests are managed in line with challenging environmental, social and economic requirements.

**Chain of custody certification** tracks forest-based products from sustainable sources to the final product. It demonstrates that each step of the supply chain is closely monitored through independent auditing to ensure that unsustainable sources are excluded.

*The world has billions of trees that are not included in the FRA 2000 definitions of "forest" and "other wooded land". Trees outside the forest (TOF) include trees in cities, on farms, along roads and in many other locations which are by definition not a forest. All trees make a contribution to the environment and to the social and economic well-being of humankind.*

*(<https://www.fao.org>: Chapter 4. Trees outside the forest - Food and Agriculture ...)*

*“Trees Outside Forests are an important part of the global resource part and we have to take care of them for improved livelihoods.” (FAO)*

- The definition of forest in Portugal already encompasses most of the possibilities for timber and non-timber materials subject to certification. **Excludes predominantly agricultural land and forest areas with urban land use.**
- **There is diversity associated with trees outside forests (TOF) systems.** Some are natural or semi-natural ecosystems with ecological complexity and ecosystem services equivalent to forests. On the other end are individual trees in fields, or linear tree formations.



## EXTENDING THE IMPACT OF PEFC BEYOND THE FOREST

**TOF CERTIFICATION** EXTENDS THE IMPACT OF PEFC CERTIFICATION BEYOND THE BOUNDARIES OF THE FOREST:

\* OPTIMIZING SOCIAL, ENVIRONMENTAL AND ECONOMIC CONTRIBUTIONS

\* PROMOTING AN ADDITIONAL NATURAL SOLUTION TO CLIMATE MITIGATION WITHIN FOREST CERTIFICATION.



## SUPPORTING RURAL DEVELOPMENT

**TOF CERTIFICATION** CAN ENCOURAGE MORE RURAL AREAS.

SMALL AREAS NOT PREVIOUSLY COVERED IN THE CERTIFICATION

(MALLS, SHELTER CURTAINS, RIPARIAN GALLERIES, CERTAIN WOODS OR SCATTERED TREES),

CAN NOW BE INCLUDED, BENEFITING FROM SUSTAINABLE MANAGEMENT.

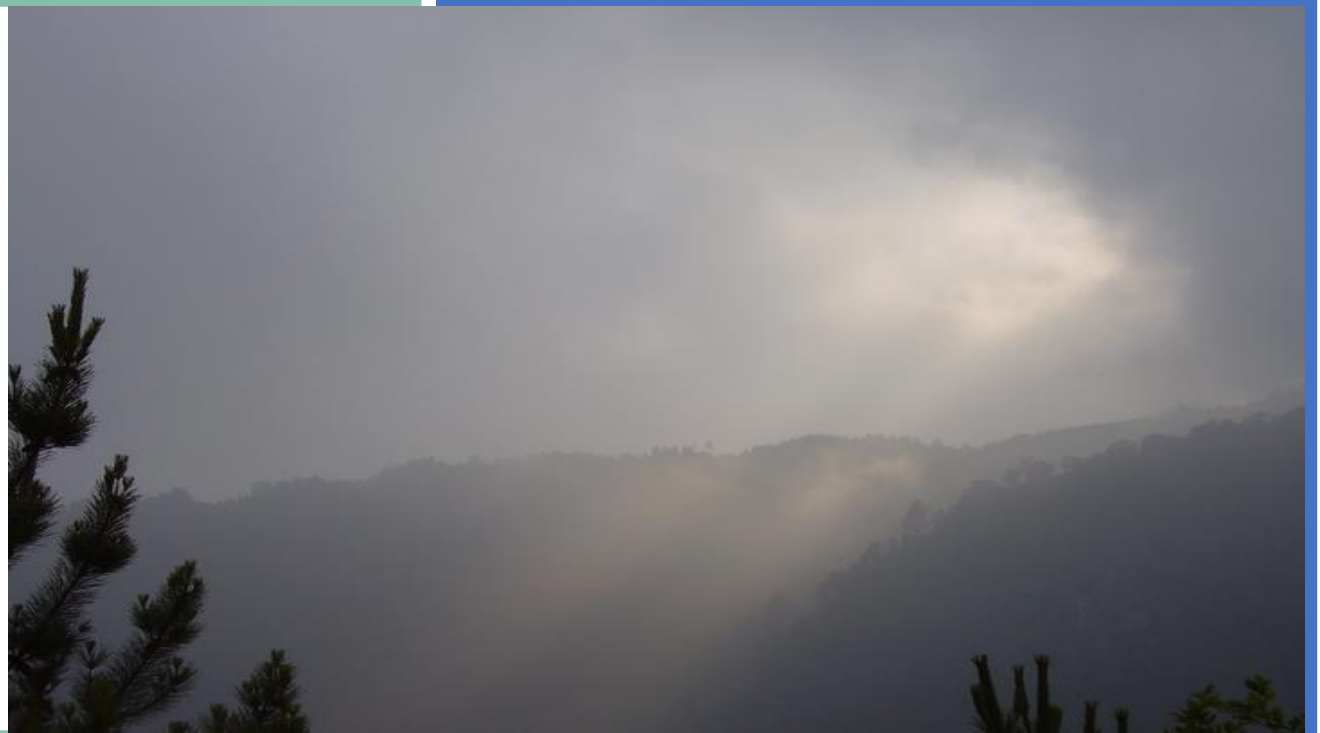


## IMPROVING SUSTAINABILITY OF URBAN FORESTS

SUSTAINABLE CITIES A BIG FOCUS OF THE PARIS AGREEMENT AND THE SUSTAINABLE DEVELOPMENT GOALS.

THROUGH PURSUING **TOF PEFC CERTIFICATION** IN URBAN AREAS, THE CONTRIBUTION OF TREES AND FORESTS TO ENVIRONMENT HEALTH AND THE WELL-BEING OF SOCIETY IS REINFORCED, AND THE LEADERSHIP AND RESPONSIBLE MANAGEMENT DEMONSTRATED BY THE ADMINISTRATION CAN BE VERIFIED AND RECOGNIZED. .

# Climate change & forests



**UMA MARCA  
QUE IMPORTA**

**There is a magic machine that sucks carbon out of the air, costs very little, and builds itself. It's called a tree. A tree is an example of a natural climate solution."**

*George Monbiot*





**Forest and Carbon  
Sequestration**

*Versus*

**Man/Society and Forest  
Management**

Climate change affects us all. At PEFC, we work to ensure the world's forests can deliver their full contribution to our climate change actions. But we can't do it alone. Together, we can all make a difference. By choosing to buy sustainable products from PEFC-certified forests, you help us safeguard forests.

---

## Climate change and forests

**Forests are at the heart of society's action to combat climate change and its impacts. As carbon sinks, trees capture and store carbon, removing significant volumes of carbon dioxide from the atmosphere. Forest products meanwhile, provide us with a carbon-neutral alternative to our reliance on fossil fuels.**



To ensure that forests reach their full potential as a climate change solution, they must be managed sustainably. Sustainable management helps to increase the amount of carbon dioxide that forests remove from the atmosphere and improves their ability to store it as carbon in their biomass.

Forest management also strengthens the capacity of people and communities living in and around forests to adapt to the effects of climate change. It provides benefits to all, from supporting local livelihoods and protecting biodiversity, to reducing rural poverty.



**PEFC**

PEFC/13-01-01



## Forests

They are considered "carbon sinks" due to the storage of CO<sub>2</sub> that occurs in the wood of the trees (50% of the wood constitution).

**Forest certification is a key tool for a forest positive future!**

USING CREDIBLE SUPPLY CHAIN ASSURANCE TO ACHIEVE PROCUREMENT AND CLIMATE ACTION TARGETS

**HOW?**



## Why is certification needed?



Forest certification increases the value of forests by building consumer trust. Creating additional value and demand for forest products is one of the best ways to keep forests standing, as it prevents them from being cleared for alternative land uses such as agriculture.

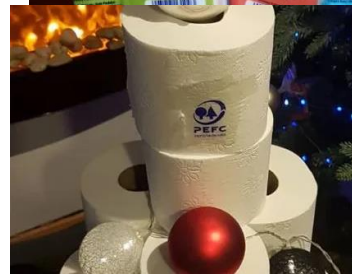


**UMA MARCA  
QUE IMPORTA**

Sustainably produced wood and paper-based goods are a renewable and environmentally friendly choice compared to other materials.

Timber continues to store carbon, even after the tree has been harvested and used. Furniture and wooden homes can store carbon for hundreds of years.

But products made of wood can only be a climate change solution if they originate from sustainably managed forests

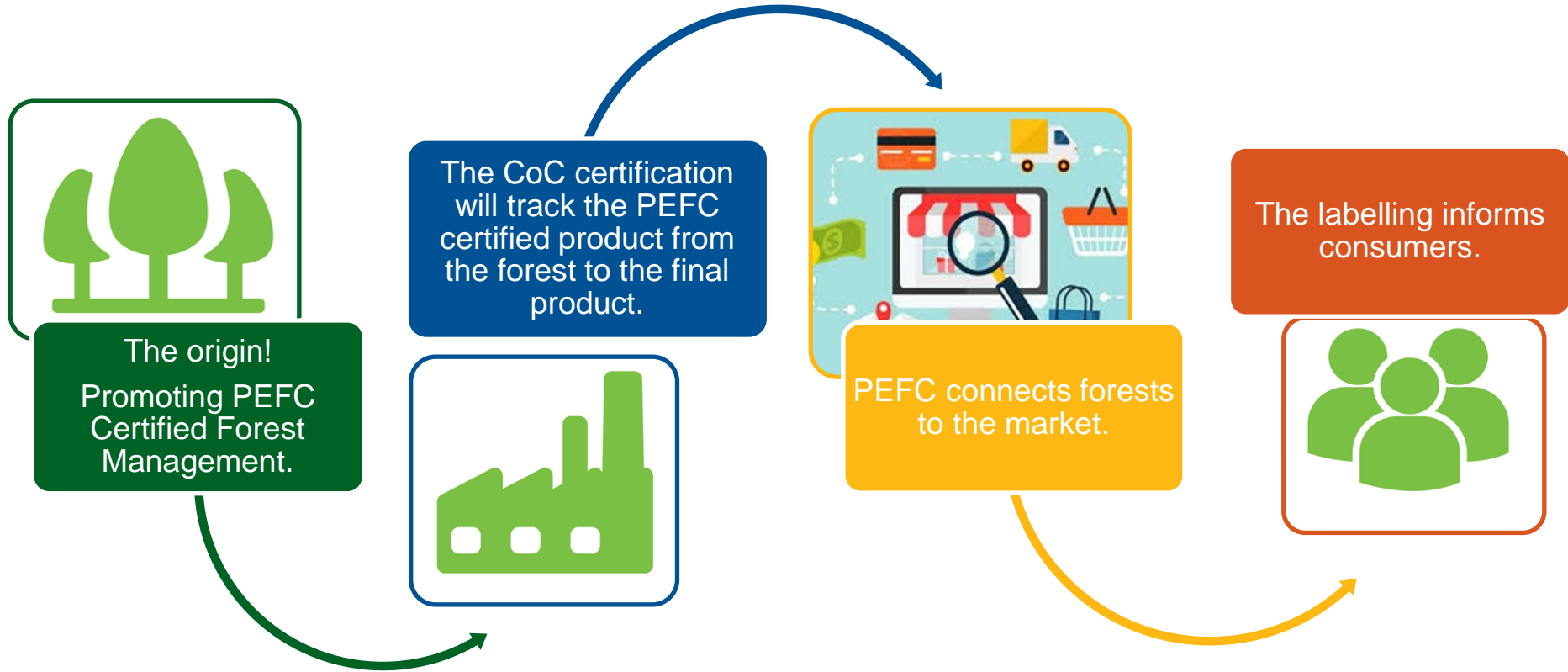


# Forests

They are the origin of several products that we use on a daily basis




# Supply chain



The PEFC label identifies that products come from sustainably managed forests. It ensures traceability from origin to the final consumer.





**At PEFC, we take care of the forests.**

It means that we can all benefit from the many products that forests provide now, ensuring that they exist over many generations.

**12** PRODUÇÃO E  
CONSUMO  
RESPONSÁVEL



Utilização de produtos PEFC é uma escolha consciente.

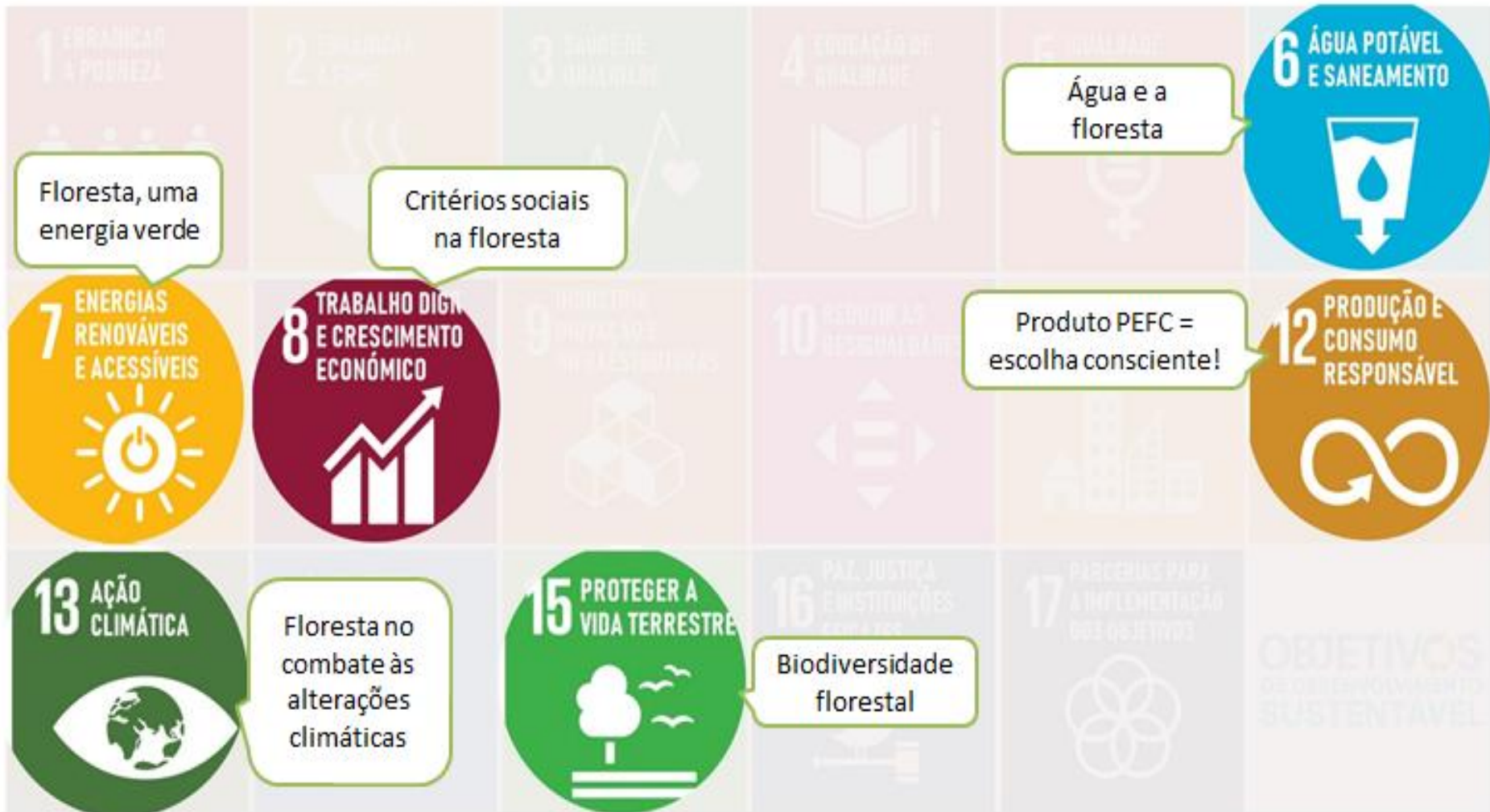
**15** PROTEGER A  
VIDA TERRESTRE



A melhor forma de proteger a floresta passa por promover o seu uso sustentável.



# Importance of PEFC for the Forest of the Future





For more information see our website [www.pefc.pt](http://www.pefc.pt)  
and follow the PEFC social networks:



## CONTACTS:



(+351) 217995153



(+351) 912257199



[RAQUEL.MARTINHO@PEFC.PT](mailto:RAQUEL.MARTINHO@PEFC.PT)